



Biff Ant[®]

Fix ant problems effectively

Key Industries Ltd
3/44L Constellation Drive PO Box 65-070,
Mairangi Bay, Auckland

Tel 09 917 1791 Fax 09 917 1793
Email sales@keyindustries.co.nz
Web www.keyindustries.co.nz

Biff Ant[®]

Fix ant problems effectively

- ✓ One of its kind Ant Treatment
- ✓ Designed and Made in NZ
- ✓ Long Lasting Results



www.keyindustries.co.nz

Fix ant problems effectively for up to 1 year

BIFF ANT® has been designed specifically in New Zealand, for New Zealand conditions and proven effective in a 3 year test programme.

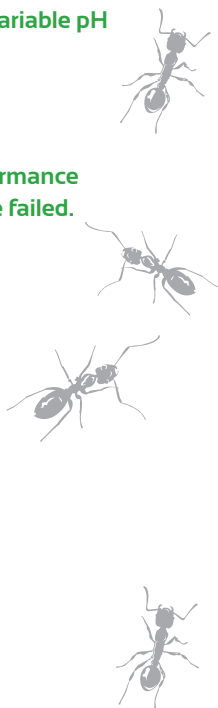
Key benefits include:

- ✓ **Efficacy against all ant species in New Zealand including Argentine and Darwin ants**
- ✓ **One Biff Ant® application can be effective for months and up to 1 year**
- ✓ **Can be used on all exterior surfaces including trees, lawns, concrete paths and exteriors of buildings**
- ✓ **Stands up to wash off, UV light, heat, variable pH of surfaces and rain degradation**
- ✓ **Compatible with a baiting programme**
- ✓ **Biff Ant® has shown outstanding performance where traditional control methods have failed.**

With the new Biff Ant® pest managers can now deal with ant problems effectively. Refer to the Biff Ant® programme brochure for full details on how to achieve long term effective ant control.

Biff Ant® certified technicians can be found at www.antpro.co.nz

Biff Ant® proven and tested over 3 years by replicated and commercial trial work.



Always read label before use

Active Ingredient: 80g/L Bifenthrin

DIRECTIONS FOR USE: Biff Ant® forms a non-repellent residual barrier for a variety of ant species. It is suitable for use in all outdoor areas e.g. paths, driveways, gardens, around dwellings, industrial sites and public areas including roadside curbing and footpaths. Use as a spray on outdoor surfaces only such as lawns, stone gardens, rocks, soil, concrete, asphalt and exterior walls. For garden areas use Biforce® granules. Biff Ant® provides residual control of Argentine ants for many months, depending on the nature of surface treated.

Application rate:

Pest	Rates per 5 litres of water	Comments
Argentine and Darwin ants.	75mls	Spray trails, ant swarms and larger areas surrounding nest sites. Thoroughly inspect the area surrounding the nest for presence of further colonies as these species form interlinked Super Colonies with many queens. Spray entire infested area.
Black house ant, White-footed house ant, <i>Iridomyrmex</i> Coastal Brown and and other species.	50-75mls	Apply to nest sites and trails outdoors. Also to exterior walls where ants are trailing. Repeat as necessary.

Application Method: Hand Tank or Knapsack

Ensure that a minimum of 5 litres of spray liquid is applied per 100m² of surface area.

On porous surfaces a higher spray volume will be required to obtain good coverage.

Always pre-mix Biff Ant® prior to adding to sprayer.

Sprayer must be cleaned after use. Rinse lines, tank and nozzles thoroughly with clean water.

Ensure sprayer is residue free before use or dedicated to Biff Ant® use only.

Take care not to allow spray drift on to windows. If spray has dried, clean spray deposit using a solvent such as turpentine or kerosene.

Do not apply on exterior surfaces where food for human consumption is being produced.

Not for agricultural use.