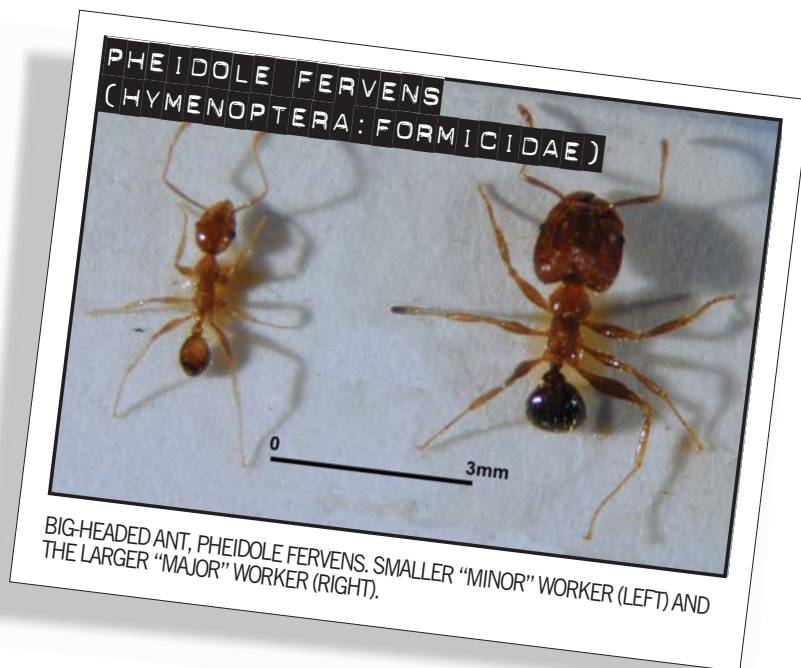


HAVE YOU SEEN ANY BIG-HEADED ANTS?



What do big-headed ants look like?

These ants vary in size from 2.5 to 4.5 mm in length. The larger ants in this species have a larger head in relation to their body size than other ant species.

They are light reddish-brown in colour with the head and abdomen having a darker appearance. They nest under stones and in the soil. Colonies can include hundreds of workers.

They are a slow moving ant compared to some other established species. Some nests can produce low mounds of fine dirt and may have a pile of dead ants nearby.

Do these ants sting?

No, they do not sting but, as with many ants, they may bite if provoked. They do not pose a significant human health risk.

Where would I find these ants?

To ensure their survival these ants are likely to look for warm places to build their nests. They can establish nests inside buildings, in pot plants and other suitable spaces in and around your property including rubbish bins.



THE THREAT

These ants have a wide range of feeding habits including live and dead insects, seeds, honeydew and many household foods. In New Zealand they could compete with some of our native ant species, affect horticultural systems, impact existing invertebrate populations and be a household nuisance.



If you think you have found big-headed ants:

Contact Biosecurity New Zealand on: **0800 80 99 66**

February 2005